



31 MAY - 14 JUNE 2025

Ch!chester
frinGe

PROGRAMME



31 MAY - 14 JUNE 2025

Chichester
fringe

PROGRAMME

CONTENTS

- 02 Welcome to Chichester Fringe
- 03 Our venues & how to book
- 04 Theatre
- 08 Music
- 12 Comedy
- 17 Family
- 18 Poetry & Spoken Word
- 19 Show Calendar
- 22 Venue map



KEY TO THE SHOWS

SHOW TITLE

ARTIST OR COMPANY

KEY SHOW INFO:

DATE, START TIME, LENGTH,
PRICE (CONCESSIONS PRICE) & VENUE

Cabaret for the End of The World ~ Cathy Wippell

10 June | 18:30 (1hr) | £8 (£6) | The Havana

The last accordionist of the apocalypse, has come to perform in the wasteland of what-used-to-be Chichester. Through a series of comedic monologues and songs, the natural & political disasters that caused the catastrophe are revealed.

S	S	M	T	W	T	F	S	S	M	T	W	T	F	S
31	1	2	3	4	5	6	7	8	9	10	11	12	13	14

SHOW DESCRIPTION

DATE CHECKER:

THE DATE IN RED INDICATES THE PERFORMANCE DAY
WITHIN THE FRINGE FORTNIGHT



WELCOME TO CHICHESTER FRINGE 2025!

If you haven't heard about us, read on...

WITH AROUND 60 ARTISTS THERE ARE LOTS OF MUST-SEE SHOWS, PACKED WITH TALENT FROM NEAR AND FAR.

Chichester Fringe is back for its 5th year with two weeks of dynamic performances: new musicals, cabaret, theatre, music nights and stand-up comedy, **running between 31 May and 14 June 2025 in the centre of the city.** This is your guide to Fringe 2025.

In 2025, we were thrilled to offer **two commissioning grants**, to help bring new original productions to life. Come and enjoy the two winners' shows on 7 June; Lin Robinson's *Toil* and Iona Rose's *Three Witches Brew*, as well as over 60 other events.



**RODNEY BECKFORD
COMEDIAN**



The brochure works in two ways: detailed event information is arranged by genre on pages **4 to 18** but you can also search using the day-by-day calendar on page **19**. **Buy your tickets online in advance on our website using the QR code** or pay on the door.

As volunteers at Chichester Fringe we're passionate in supporting and promoting local and new performers. In February, **we gratefully received an Arts, Sports and Science award from Chichester City Council** in recognition of the impact we have made of developing arts in our city. We now need your support - by coming to see a show or two.

We can't wait to see you there!

The Chichester Fringe Team.

OUR VENUES

and how to book...

11 VENUES ACROSS THE CITY, FROM THEATRE STUDIOS
TO CAFES AND BARS

ONE · FOUR
The ShowRoom

JAM.



We want to celebrate the brilliant venues across Chichester. That's why you can attend events at places like **The Jam Cafe** in South Street, **The Old Court Room** in North Street or the **New Park Centre** near Priory Park.

This year, we've added **Christ Church**, **The ShowRoom** and **The Havana** to our venue list. To find out more about accessibility, visit our website: www.chichesterfringe.co.uk/our-venues.

YOU CAN USE THIS
QR CODE



To book tickets to a show, go to the 'What's on' page on our website. You can filter events by genre, read more about them and purchase your tickets. Or, provided there's space, you can **buy tickets on the door from our volunteers**. It's worth remembering each venue has a different capacity, with **some shows having a very limited number of seats**.

Seats are first come, first served. Tickets are non-refundable, though we may be able to exchange them to a different event - email us on info@chichesterfringe.co.uk for more information or check our **Tickets & Refunds Policy** online. Some events are **free**, with most others offering a **standard and concessionary rate** (shown in brackets).

Now... flick through and choose your shows!

THEATRE

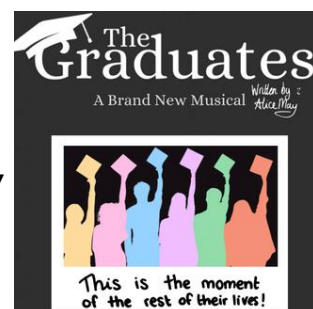
From drama to physical theatre performances

The Graduates: A Brand New Musical ~ Make It May Productions

31 May | 16:00 (1hr) | £8 (£6) | The Old Court Room

A coming-of-age musical following six friends trying to navigate life after graduation. With new jobs, growing romances and the challenges of maintaining friendships, they sing and dance their way through the ups and downs of adulthood.

S S M T W T F S S M T W T F S
31 1 2 3 4 5 6 7 8 9 10 11 12 13 14



Glitter, Guilt and Good Intentions - A Self Help Cabaret ~ Belle Street

31 May | 20:00 (1hr) | £8 (£6) | JAM Café

Belle Street's cabaret blends humour, parodies and musical theatre in a 'frazzled rather than filtered' celebration of life's chaos. This show proves that perfection is overrated - and reinventing yourself can be just as confusing as it is fun.

S S M T W T F S S M T W T F S
31 1 2 3 4 5 6 7 8 9 10 11 12 13 14



Lightbulbs ~ Woodhouse & Roderick

04 June | 18:00 (45mins) | £8 (£6) | Chichester City Arts Centre

Absurdist play exploring modern-day queer relationships through the interactions between two gay men, Oran and Ezekiel. A humorous and introspective exploration of the complexities of modern relationships within the LGBTQ+ community.

S S M T W T F S S M T W T F S
31 1 2 3 4 5 6 7 8 9 10 11 12 13 14



Potted Pride and Prejudice ~ Breakwater Performers

04 June | 19:45 (45mins) | £8 (£6) | Chichester City Arts Centre

A fast-paced 'Potted' adaptation of Pride and Prejudice. All the funny bits in Austen's best loved romantic comedy and all the beloved characters played by four super-talented actors. Think it can't be done? Think again!

S S M T W T F S S M T W T F S
31 1 2 3 4 5 6 7 8 9 10 11 12 13 14



Unseen Portrait of the Heart ~ UPOTHEATRE

04 June | 21:00 (45mins) | £8 (£6) | Chichester City Arts Centre

An attempt to undress our souls and to show what we hide inside of our hearts. The main parts of the human experience. Falling into an embrace of the world, trying to trust and to show what you feel. Life without the wrapper.

S S M T W T F S S M T W T F S
31 1 2 3 4 5 6 7 8 9 10 11 12 13 14



Things A Bright Young Queer Can Do ~ Kitchen Sink Productions

07 June | 14:30/16:00 (45mins) | £8 (£6) | The Old Court Room

Queerhood is harder than anyone ever gives you credit for. Drawn from interviews across the UK, this piece centres the voices of LGBTQ+ people exploring their identities, challenges, successes and dreams, offering a poignant reflection...

S	S	M	T	W	T	F	S	S	M	T	W	T	F	S
31	1	2	3	4	5	6	7	8	9	10	11	12	13	14

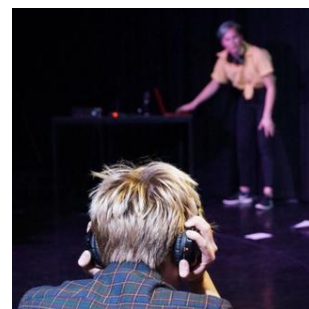


Drowning In The Sound ~ The Midnight Florist Collective

07 June | 17:30 (90mins) | £8 (£6) | Chichester City Arts Centre

Over 20hrs of recordings gifted by survivors of domestic and sexual abuse, telling in their own words the stories of those assaulted in the same month that would bring attention not just to the #MeToo movement but the abusers across the world...

S	S	M	T	W	T	F	S	S	M	T	W	T	F	S
31	1	2	3	4	5	6	7	8	9	10	11	12	13	14

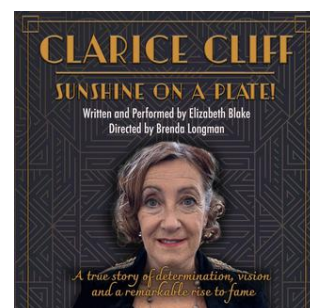


Clarice Cliff: Sunshine on a Plate ~ Elizabeth Blake

07 June | 16:30 (1hr) | £8 (£6) | One-o-Four

Celebrating the extraordinary life and work of trailblazing ceramic artist Clarice Cliff. Her work represented the new spirit of the 1930's, bringing sunshine into many homes, but in private she concealed a secret which could have ruined her...

S	S	M	T	W	T	F	S	S	M	T	W	T	F	S
31	1	2	3	4	5	6	7	8	9	10	11	12	13	14



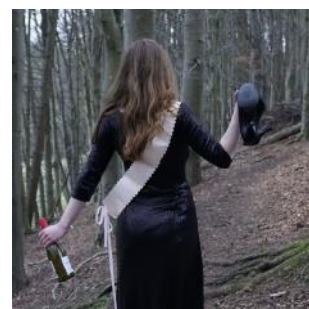
Three Witches Brew ~ Iona Rose

07 June | 19:30 (45mins) | £8 (£6) | One-o-Four

"When fair is foul and foul is fair, these three witches have glitter in their hair."

Lady Macbeth interrupts a hen-do with a fateful request: tell her husband he will be king. Chaos ensues as the (rather drunk) witches try to support their sister-in-crime.

S	S	M	T	W	T	F	S	S	M	T	W	T	F	S
31	1	2	3	4	5	6	7	8	9	10	11	12	13	14

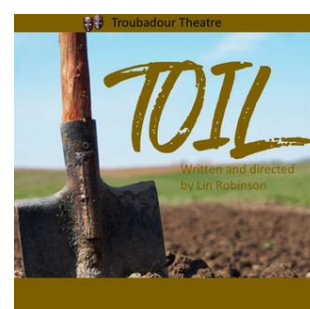


Toil ~ Lin Robinson (Troubadour Theatre)

07 June | 20:30 (1hr) | £8 (£6) | One-o-Four

'Toil' tells the story of six women confined on a farm and who must toil every day, in a state of 'transition', to atone for their past mortal sins. A new arrival upsets the group and through them we learn why the women find themselves in this purgatory.

S	S	M	T	W	T	F	S	S	M	T	W	T	F	S
31	1	2	3	4	5	6	7	8	9	10	11	12	13	14



**YOUR SPACE -
MAKE NOTES!**

Tea and Coffee Not Included ~ Fancy Flamingo

08 June | 16:00 (1hr) | £8 (£6) | Chichester City Arts Centre

A series of totally disjointed scenes. Or is it? Only you can decide whether there's a method in the madness. Join a colourful and eclectic cast of characters as they make their way through scenes of love, death, hope, cynicism and more!

S	S	M	T	W	T	F	S	S	M	T	W	T	F	S
31	1	2	3	4	5	6	7	8	9	10	11	12	13	14



Destination: 'Old Hag' ~ (uncredited) Presents

08 June | 17:30 (1hr) | £8 (£6) | Chichester City Arts Centre

Set in a theatre broom cupboard, next to the only toilet, this is (possibly) the world's first Situation-Operatic-Comedy! Join the Ladies of the Chorus as they chart their ups and downs in the world of opera with humour, heart, and some live opera singing!

S	S	M	T	W	T	F	S	S	M	T	W	T	F	S
31	1	2	3	4	5	6	7	8	9	10	11	12	13	14



The Welching Conspiracy: A First Listen ~ Jack Stone

08 June | 19:00 (1hr) | £8 (£6) | Chichester City Arts Centre

Jessica is fresh out of Uni and has moved to a village she's never heard of after her grandfather's death. Little Welching, as she finds, is far from your average village, and what starts as a podcast of curiosities unravels into something far stranger...

S	S	M	T	W	T	F	S	S	M	T	W	T	F	S
31	1	2	3	4	5	6	7	8	9	10	11	12	13	14



Other People's Shoes ~ Jacquie Penrose & Coast Theatre

08 June | 20:30 (1hr) | £8 (£6) | Chichester City Arts Centre

Isobel wants to tell stories. But whose stories is she entitled to tell? And is Howard the right person to ask for help? Two actors have vivid past lives to draw on but how does that inform what they can do next, both personally and professionally.

S	S	M	T	W	T	F	S	S	M	T	W	T	F	S
31	1	2	3	4	5	6	7	8	9	10	11	12	13	14



University of Chichester BA (Hons) Acting Showcase 2025

11 June | 13:00 (1hr) | £1 | The ShowRoom

A curated collection of filmed scenes showcasing the vibrant talent emerging from BA (Hons) Acting students at the University of Chichester. Twenty actors present a diverse collection of powerful monologues and dynamic scenes on film.

S	S	M	T	W	T	F	S	S	M	T	W	T	F	S
31	1	2	3	4	5	6	7	8	9	10	11	12	13	14



**YOUR SPACE -
MAKE NOTES!**



Shhh... Obey ~ Quiet Chaos Collective

11 June | 18:30 (30mins) | £8 (£6) | Chichester City Arts Centre

"An overdue book, a strict librarian, and a giggle of clowns enter a library... what could go wrong?" In a place where rules are sacred, these clowns just love breaking things. In a world obsessed with power, are we all powerless? Prepare for chaos!

S	S	M	T	W	T	F	S	S	M	T	W	T	F	S
31	1	2	3	4	5	6	7	8	9	10	11	12	13	14



Sibling Dinner ~ FRESHLY SQUEEZED THEATRE

11 June | 21:00 (1hr) | £8 (£6) | Chichester City Arts Centre

3 brothers are summoned for a family meal. The eldest a lawyer, middle, an influencer, youngest a speaker. Throughout the meal, secrets are revealed and their world is turned inside out... can their bond survive until the garlic bread is done?

S	S	M	T	W	T	F	S	S	M	T	W	T	F	S
31	1	2	3	4	5	6	7	8	9	10	11	12	13	14



A Room Full Of Idiots ~ Kuckoo Theatre

12 June | 21:15 (45min) | £8 (£6) | New Park Studio

Improbable and humorous situations with wacky characters, watch as the performers turn it into a whole scene. With audience suggestions for styles, so you can see them work their magic and create a show on the spot without any rehearsal!

S	S	M	T	W	T	F	S	S	M	T	W	T	F	S
31	1	2	3	4	5	6	7	8	9	10	11	12	13	14



InterACT Festival ~ University of Chichester

13 June | All day | £1 | The ShowRoom

A festival of work from the graduating students of BA (Hons) Theatre, Drama, Theatre & Directing and Acting students at the University of Chichester. A collection of performances, directed work, productions, workshops, installations and more.

S	S	M	T	W	T	F	S	S	M	T	W	T	F	S
31	1	2	3	4	5	6	7	8	9	10	11	12	13	14



Grandma's Shop ~ Julie Flower

13 June | 19:00 (1hr) | £8 (£6) | Christ Church

"Clothes, cats and counter-culture. Sheffield, 1989. Loveable, eccentric septuagenarian Hilda, has run a second-hand clothes shop for decades to make money to feed 30 stray cats. One day, a journalist from The Guardian walks in..."

S	S	M	T	W	T	F	S	S	M	T	W	T	F	S
31	1	2	3	4	5	6	7	8	9	10	11	12	13	14



07523 823116

WWW.CHICHESTERFRINGE.CO.UK

The Seagull ~ Youberry Productions & Pivotal Performance Company
 11/12/13 June | 19:00 (2.5hrs incl interval) | £12 (£8) | Havant South Downs College
 A reimagined and repositioned version of The Seagull, portraying today's social media-driven world, the characters' struggles for recognition and the impact of public opinion on their self-worth.



S	S	M	T	W	T	F	S	S	M	T	W	T	F	S
31	1	2	3	4	5	6	7	8	9	10	11	12	13	14

THE LAST BANTAM ~ Michael Hughes

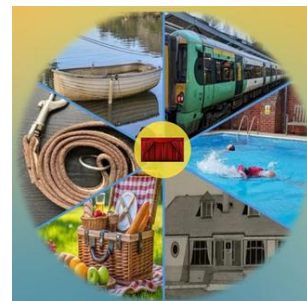
14 June | 16:00 (1hr 20min incl Q&A) | £10 (£8) | One-o-Four
 1914 – The world is at war. Britain recruits 30,000 men between 5'-5'3" to fight. These men are called bantams after the small, fierce chicken. 1918 – One bantam remains - Patrick Michael Wolfe, a teacher from Dublin. This is his story.



S	S	M	T	W	T	F	S	S	M	T	W	T	F	S
31	1	2	3	4	5	6	7	8	9	10	11	12	13	14

Kaleidoscope ~ The Playweavers

14 June | 19:30 (2hrs) | £12 (£10) | One-o-Four
 "Kaleidoscope" is a tapestry of short plays. A moving journey through life's joys, sorrows, and hopes. From elation to guilt, to betrayal. Each play captures a snapshot of human life; its joys and challenges. People, places and plots.



S	S	M	T	W	T	F	S	S	M	T	W	T	F	S
31	1	2	3	4	5	6	7	8	9	10	11	12	13	14

From new music to
bands and more

MUSIC

Laura L Page

31 May | 18:00 (1hr) | £8 (£6) | JAM Cafe

Laura L Page is a singer songwriter from Haslemere, Surrey. Her influences are from rock, indie rock, indie pop and indie folk. She'll be playing original songs with full five piece band.



S	S	M	T	W	T	F	S	S	M	T	W	T	F	S
31	1	2	3	4	5	6	7	8	9	10	11	12	13	14

Songs of the Seas and their Rivers ~ The Estuary Men

01 June | 17:30 (1hr) | £10 (£8) | Canal Cafe

A folk band singing 3-part harmonies with flute, harmonica, banjo and guitar accompaniment. 2025 will be their third year performing at Chichester Fringe and at the South Downs Music Festival!



S	S	M	T	W	T	F	S	S	M	T	W	T	F	S
31	1	2	3	4	5	6	7	8	9	10	11	12	13	14

The Turning Year ~ South Downs Folk Singers

01 June | 19:00 (90mins) | £12 (£10) | Canal Cafe

An evening of singing, both a cappella and accompanied, with a couple of seasonal readings as the South Downs Folk Singers portray the turning year in the traditional songs of the South Downs.

S	S	M	T	W	T	F	S	S	M	T	W	T	F	S
31	1	2	3	4	5	6	7	8	9	10	11	12	13	14



Music Night ~ Chichester Fringe

03 June | 18:00 (2hrs) | £10 (£8) | JAM Cafe

Your MC Ruby Bodenham hosts a night of music with Georgie-Louise Brooks, SammyG and Sofia Gillani.

S	S	M	T	W	T	F	S	S	M	T	W	T	F	S
31	1	2	3	4	5	6	7	8	9	10	11	12	13	14



Folk Reimagined ~ Oving Folk

07 June | 14:15 (1hr 45mins incl interval) | £12 (£10) | Chichester City Arts Centre

An eclectic ensemble playing and singing their own arrangements of folk classics reimagined with jazz, blues and gospel. Voice, fiddle, cello, bass, guitar, keyboard, saxophone, trumpet, oboe, flute, recorders and bodhran... but not all at once!

S	S	M	T	W	T	F	S	S	M	T	W	T	F	S
31	1	2	3	4	5	6	7	8	9	10	11	12	13	14



David Robinson: The Cold Heart Revue

07 June | 18:30 (1hr) | £8 | Picture Palace, New Park Centre

Brand new autobiographical songwriting. David Robinson aka The Cold Heart Revue is from Portsmouth, reaching No#1 on the iTunes Blues Chart, appearing on 'The Royal Variety Performance' (ITV), Isle of Wight Festival, Victorious Festival and more.

S	S	M	T	W	T	F	S	S	M	T	W	T	F	S
31	1	2	3	4	5	6	7	8	9	10	11	12	13	14



Mia Reed

07 June | 20:00 (1hr) | £5 | Picture Palace, New Park Centre

Emerging singer-songwriter from West Sussex, renowned for her heartfelt Indie-Pop songs and soulful performances. Influenced by artists like Maisie Peters, Mia's lyrics are honest and talk about growing up dealing with loss, love and friendship.

S	S	M	T	W	T	F	S	S	M	T	W	T	F	S
31	1	2	3	4	5	6	7	8	9	10	11	12	13	14



Cabaret Night ~ Chichester Fringe

10 June | 18:30 (2.5hrs inc. interval) | £12 (£10) | Canal Cafe

Cabaret! A night of exciting music as young talent in Chichester take you on a musical journey, including pop, musical theatre and jazz.

7	S	S	M	T	W	T	F	S	S	M	T	W	T	F	S
	31	1	2	3	4	5	6	7	8	9	10	11	12	13	14





The Moonlight Walk

Saturday 14th June | Chichester College

Finish Chichester Fringe with a charity walk that will make a difference!

Join hundreds of other walkers for a night to remember under the stars, in aid of St Wilfrid's Hospice

Sign up | stwh.co.uk/moonlight



St Wilfrid's Hospice
Making a difference to local lives

Charity No. 281963

Sponsored by


Henry Adams



new park centre



50 GOLDEN YEARS IN THE HEART OF CHICHESTER

Celebrate this milestone and rediscover what New Park has to offer - we have teamed up with groups to showcase great events throughout the year including, 'My Chichester' school art competition, a history of New Park talk with interactive display, a time capsule project and our big 50th Anniversary weekend in September!

HEART OF NEW PARK FESTIVAL

As part of the year's 50th celebrations we're also hosting **The Heart of New Park Festival - a special event within Chichester Fringe**. This festival celebrates the inspiring individuals and groups who bring New Park to life every week. Spotlighting the incredible talent of our local artists, musicians, dancers and authors.

Tony Hirst Unforeseen Consequences - Prop Roulette - **Bellydance To Fitness** - Intro To Tap Dancing - **Everything's Coming Up Roses Musical Theatre** - Heat 2 Fringe's New Act Of The Year Competition - **Bryan Stoops Celebrity Girlfriend Draft** - Cordelia Graham - **The Cold Heart Revue Live David Robinson's Auto Biographical Songwriting** - Mia Reed Heartfelt Indie Pop Songs & Soul - **120 Seconds: Chichester Film & Video Makers Short Films** - Jaz Mattu Unique Brand Of Absurdist Theatrical Multi-Media Comedy - **Rodney Beckford Fear Of Failure 'Learn From Mistakes & Make Slightly Different Ones** - Spanish Dance & Flamenco With International Dancer, Helena "La Leyenda - **Flyweight A Multimedia Exploration Of The Poetry Of Boxing** - Who Wrote This, Improvised Comedy Your Suggestions & Our Creation - **A Room Full Of Idiots Improvised Comedy**

For more details see listings

NPC50

Bringing people together



Find out more:

newparkcentre.org.uk

COMEDY

A collection of comedy shows and stand-up sets

Prop Roulette ~ Matt Male

31 May | 20:30 (1hr) | £8 (£6) | New Park Studio

Compilation show where comedians will be randomly assigned props on the night and tested on their improv ability, by trying to incorporate the prop as best as possible into their routine... with a prize for the best/most innovative use of a prop!

S	S	M	T	W	T	F	S	S	M	T	W	T	F	S
31	1	2	3	4	5	6	7	8	9	10	11	12	13	14



Comedy Night (Heat 1) ~ Epic Comedy

03 June | 19:30 (2.5hr) | £5 | The Havana

The first 10 comedians battle it out for the chance to win not only the title of New Act of the Year 2025 but also a spot on a professional Epic Comedy night. You may find the next Michael McIntyre, you may not... either way, you'll definitely have a laugh!

S	S	M	T	W	T	F	S	S	M	T	W	T	F	S
31	1	2	3	4	5	6	7	8	9	10	11	12	13	14



Comedy Night (Heat 2) ~ Epic Comedy

05 June | 19:30 (2.5hr) | £5 | New Park Studio

The second 10 comedians battle it out for the chance to win not only the title of New Act of the Year 2025 but also a spot on a professional Epic Comedy night.

S	S	M	T	W	T	F	S	S	M	T	W	T	F	S
31	1	2	3	4	5	6	7	8	9	10	11	12	13	14



Silly Gross Rants and Jokes ~ Sam Love

06 June | 18:00 (45mins) | £5 | Canal Cafe

A deep dive into the world's nonsense, blending irritation and absurdity in the weirdest, funniest ways. Expect chaotic rants, bizarre observations and unexpected whimsy. If frustration fuels your humour, this one's for you.

S	S	M	T	W	T	F	S	S	M	T	W	T	F	S
31	1	2	3	4	5	6	7	8	9	10	11	12	13	14



Shalaka Kurup: Worse in Progress

06 June | 19:00 (1hr) | £8 (£6) | Canal Cafe

Shalaka has a mental disorder, but which one? A work-in-progress, this is a show about a comedian in therapy. Revolutionary! Join Shalaka to convince her therapist she needs a diagnosis (any will do) so she can be content. Or better yet, interesting...

S	S	M	T	W	T	F	S	S	M	T	W	T	F	S
31	1	2	3	4	5	6	7	8	9	10	11	12	13	14



A Cosmologist's Guide To Life and Love ~ Dr Julian Mayers

06 June | 20:30 (1hr) | £8 (£6) | Canal Cafe

Down to earth, funny and uplifting, this explores the chances of you being born, how far you have to travel to find yourself in an infinite Universe, how you can travel in time, and whether Love exists out there in the Cosmos.

S	S	M	T	W	T	F	S	S	M	T	W	T	F	S
31	1	2	3	4	5	6	7	8	9	10	11	12	13	14



Bryan Stoops: Celebrity Girlfriend Draft

06 June | 19:00 (1hr) | £8 (£6) | New Park Studio

Bryan Stoops, a New York City comedian living in the UK, presents a (mostly) clean, stand-up comedy show as seen at The Hollywood Fringe, Leicester Comedy Festival, & Edinburgh Fringe Festival. Soon to be released as a comedy special on Prime.

S	S	M	T	W	T	F	S	S	M	T	W	T	F	S
31	1	2	3	4	5	6	7	8	9	10	11	12	13	14



Cordelia Graham

06 June | 20:30 (1hr) | £8 (£6) | New Park Studio

"My dad is dying of dementia so I moved back to my childhood home to care for him and started a job at a comprehensive, bringing back memories of being an eleven year old nerd. Will I survive?"

S	S	M	T	W	T	F	S	S	M	T	W	T	F	S
31	1	2	3	4	5	6	7	8	9	10	11	12	13	14



Hill & Jones Comedy Catastrophe

07 June | 18:00 (1hr) | £8 (£6) | One-o-Four

'Serious comic' Ryan tries to keep his show on the rails while 'loveable idiot' Ben can't help but cause things to go wrong! Fast-paced original & adapted sketches, stand-up, monologues, dance & drag, all a disastrous tale of mishaps & mayhem...

S	S	M	T	W	T	F	S	S	M	T	W	T	F	S
31	1	2	3	4	5	6	7	8	9	10	11	12	13	14



DON'T MISS: "AN EXHIBITION. ART IN CONVERSATION."



Magdalena van der Passe & Ovid's Metamorphoses

31 May - 14 June | 09:00-16:00 | Free | Learning Resource Centre, UoC

An exhibition and performance, poetry, research and art in conversation, arguments as pertinent today as when they first appeared in print. Virtual performances from the poetry and sound project *Ovid with Reverb* accompany the exhibition.

S	S	M	T	W	T	F	S	S	M	T	W	T	F	S
31	1	2	3	4	5	6	7	8	9	10	11	12	13	14



Jaz Mattu: Forever

07 June | 19:00 (1hr) | £8 (£6) | New Park Studio

The loveable Kent comedian is back with his unique brand of absurdist theatrical multi-media comedy... forever. Join him as he explores the idea of independence vs attachment. Jaz is a British Asian standup comedian, writer and musician.

S	S	M	T	W	T	F	S	S	M	T	W	T	F	S
31	1	2	3	4	5	6	7	8	9	10	11	12	13	14



Rodney Beckford: Fear of Failure

07 June | 20:30 (1hr) | £8 (£6) | New Park Studio

"Learning from mistakes and making slightly different ones." Fear of failure is a one man stand-up comedy show, that centres on some of Rodney Beckford's more momentous mistakes, miss steps, errors and not to mention his short comings.

S	S	M	T	W	T	F	S	S	M	T	W	T	F	S
31	1	2	3	4	5	6	7	8	9	10	11	12	13	14



Phil Green: A Broken Man's Guide to Fixing Others

07 June | 19:30 (1hr) | £8 (£6) | Chichester City Arts Centre

Having definitely 100% totally recovered from a breakdown, Phil brings us a show that can save all men from a mental health crisis (well, maybe not all men). As heard on BBC Radio 4, multiple award nominations and over 20 million views on TikTok.

S	S	M	T	W	T	F	S	S	M	T	W	T	F	S
31	1	2	3	4	5	6	7	8	9	10	11	12	13	14



Regional Huns ~ Matt Male

07 June | 21:00 (1hr) | £8 (£6) | Chichester City Arts Centre

Compilation show of comedians from across the UK and beyond - bringing a platform to marginalised groups in comedy - female, queer and POC voices. Character comedians, sketch comedians, musical comedians and drag acts welcome.

S	S	M	T	W	T	F	S	S	M	T	W	T	F	S
31	1	2	3	4	5	6	7	8	9	10	11	12	13	14



Cabaret for the End of The World ~ Cathy Wippell

10 June | 18:30 (1hr) | £8 (£6) | The Havana

The last accordionist of the apocalypse, has come to perform in the wasteland of what-used-to-be Chichester. Through a series of comedic monologues and songs, the natural & political disasters that caused the catastrophe are revealed.

S	S	M	T	W	T	F	S	S	M	T	W	T	F	S
31	1	2	3	4	5	6	7	8	9	10	11	12	13	14



**YOUR SPACE -
MAKE NOTES!**



Andrew White: Rhinestone Comedian (WIP)

10 June | 20:00 (1hr) | £8 (£6) | The Havana

Treat yourself to a deliciously witty & hilarious night out as comedian Andrew White tests out his latest stand-up show ahead of a national tour. "Very exciting and very funny" (Joe Lycett) | "Go see him, he's sublime!" (Maisie Adam)

S	S	M	T	W	T	F	S	S	M	T	W	T	F	S
31	1	2	3	4	5	6	7	8	9	10	11	12	13	14



Comedy Night (FINAL) ~ Epic Comedy

10 June | 19:30 (2.5hr) | £10 | One-o-Four

Your top 10 comedians battle it out for the chance to win not only the title of New Act of the Year 2025 but also a spot on a professional Epic Comedy night. You'll definitely have a laugh!

S	S	M	T	W	T	F	S	S	M	T	W	T	F	S
31	1	2	3	4	5	6	7	8	9	10	11	12	13	14



Baron Fortitude

11 June | 19:30 (1hr) | £8 (£6) | Chichester City Arts Centre

Baron Fortitude, winner of the Chichester Fringe New Act of the Year 2024, presents a full hour of Victorian hip-hop, stand-up and songs!

S	S	M	T	W	T	F	S	S	M	T	W	T	F	S
31	1	2	3	4	5	6	7	8	9	10	11	12	13	14

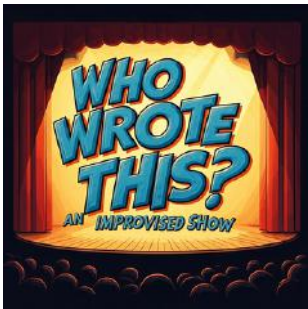


WHO WROTE THIS? ~ The Audition Room

12 June | 20:00 (1hr) | £8 (£6) | New Park Studio

A completely improvised comedy show. No scripts or rehearsals, the show thrives on audience suggestions, creating unpredictable scenes and stories. Each show is fresh, spontaneous, and unique, offering an exciting, unscripted adventure every time.

S	S	M	T	W	T	F	S	S	M	T	W	T	F	S
31	1	2	3	4	5	6	7	8	9	10	11	12	13	14



Rabbit Hole Comedy: The Priest and the Poet

13 June | 19:30 (1hr) | £8 (£6) | Canal Cafe

The Reverend - currently in rehab for over-blessing and drinking communion wine - and Beat Poet Alan Ginsburger - Wordmonger and Polygamist who lived in a commune. Rabbit Hole Comedy presents a delicious evening of surreal comedy.

S	S	M	T	W	T	F	S	S	M	T	W	T	F	S
31	1	2	3	4	5	6	7	8	9	10	11	12	13	14



YOUR SPACE -
MAKE NOTES!

COMEDY CONTINUED

A collection of comedy shows and stand-up sets

Escape the Rat Race ~ Emily Davis

13 June | 20:30 (1hr) | £8 (£6) | Christ Church

Blodwen navigates the highs and lows of 9-5 living and starts to plot her escape. Full of witty musical numbers that hold a mirror up to the joys and mundanity of the working world, this is a must-see for anyone who has ever worked in an office.

S	S	M	T	W	T	F	S	S	M	T	W	T	F	S
31	1	2	3	4	5	6	7	8	9	10	11	12	13	14

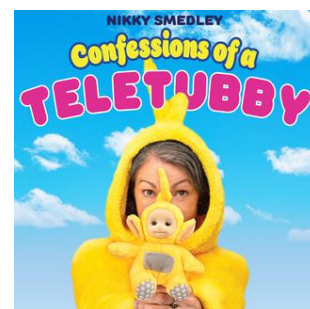


Confessions of a Teletubby ~ Nikki Smedley

14 June | 17:45 (1hr 10min) | £10 (£8) | One-o-Four

You remember Teletubbies don't you? Did you ever wonder what it was like behind the scenes? Discover the truth with the original LaaLaa as she spills what it took to become one of the world's most famous giant yellow puppets.

S	S	M	T	W	T	F	S	S	M	T	W	T	F	S
31	1	2	3	4	5	6	7	8	9	10	11	12	13	14



Festival
OF CHICHESTER
festivalofchichester.co.uk @festofchi #festofchi



14 JUNE-20 JULY

2025



MUSIC * ART * HISTORY * FILM * BOOKS & MORE



Check out our film screenings! 🎬

120 Seconds ~ Chichester Film and Video Makers

07 June | 11:00 (90mins) | £3 | Chichester Cinema

"What is really up with that DeLorean...?" 120 Seconds premiere amongst others such as *Lucky Jem*, *Shippams*, *Health and Safety on HMS Victory*, *Lost and found again*, *Eggs*, and *Walk on the Wild side* as part of an 80 minute programme.

S	S	M	T	W	T	F	S	S	M	T	W	T	F	S
31	1	2	3	4	5	6	7	8	9	10	11	12	13	14



Shows friendly for all the family

FAMILY

TADAA Showteam presents *Oliver!* ~ TADAA

07 June | 11:00 (20mins) | £2 | One-o-Four

The TADAA Showteam are performing an excerpt from *Oliver!* the Musical. Including all of the classic songs, we will take you on a journey with Oliver, Dodger, Fagin, Nancy and all the pickpockets of London!

S	S	M	T	W	T	F	S	S	M	T	W	T	F	S
31	1	2	3	4	5	6	7	8	9	10	11	12	13	14



GIRAFFE

CHARTERED CERTIFIED
ACCOUNTANTS

HELPING LOCAL BUSINESSES AND INDIVIDUALS
REACH NEW HEIGHTS!

PROUDLY SUPPORTING CHICHESTER FRINGE

WWW.GIRAFFEACCOUNTANTS.CO.UK

01243 972 449

INFO@GIRAFFEACCOUNTANTS.CO.UK

The Teddy Bear Picnic Trip ~ Family Fringe on the Canal

08 June | 12:00 (90mins) | £15 | Chichester Canal

You'll enjoy great entertainment for you and your little ones, plus a meet & greet with Eddie teddy! This event takes place on the Richmond Boat along Chichester Canal, so bring along your picnic and prepare for some teddy-tastic fun!

S	S	M	T	W	T	F	S	S	M	T	W	T	F	S
31	1	2	3	4	5	6	7	8	9	10	11	12	13	14



POETRY & SPOKEN WORD

Stories and tales both
classical and new

Unforeseen Consequences ~ Tony Hirst

31 May | 19:00 (1hr) | £8 (£6) | New Park Studio

A box of precious things brings a tale to mind of a secret that brought a community together and a King's purchase from a traveller that ruined his banqueting table. But how does a stolen wish ring continue to work its magic?

S	S	M	T	W	T	F	S	S	M	T	W	T	F	S
	1	2	3	4	5	6	7	8	9	10	11	12	13	14



³¹*Spoken Word Night ~ Chichester Fringe*

05 June | 19:00 (1hr 45mins) | £12 (£10) | The Havana

Your MC Ryan Burle presents a night of spoken word and poetry at The Havana in Chichester. With Jill Palmer and Charlie Rosse.

S	S	M	T	W	T	F	S	S	M	T	W	T	F	S
	1	2	3	4	5	6	7	8	9	10	11	12	13	14



FLYWEIGHT ~ LLL Productions

12 June | 19:00 (50mins) | £8 (£6) | New Park Studio

Multimedia literature bringing together poet Maggie Sawkins and director Mark C. Hewitt to explore boxing, and in particular, female boxing. With contributions from fighters, this literary entertainment "sure packs a punch."



S	S	M	T	W	T	F	S	S	M	T	W	T	F	S
	1	2	3	4	5	6	7	8	9	10	11	12	13	14








SHOW CALENDAR

KEY: THEATRE | MUSIC | COMEDY | POETRY & SPOKEN WORD | FAMILY

DATE	TIME	EVENT	VENUE	PRICE
31 May	09-16	 Magdalena van der Passe	LRC, UoC	Free
31 May	16:00	 The Graduates	The Old Court Room	£8/£6
31 May	18:00	 Laura L Page	JAM Cafe	£8/£6
31 May	20:00	 Glitter, Guilt... (Belle Street)	JAM Cafe	£8/£6
31 May	19:00	 Unforeseen Consequences	New Park Studio	£8/£6
31 May	20:30	 Prop Roulette	New Park Studio	£8/£6
01 June	17:30	 The Estuary Men	Canal Cafe	£10/£8
01 June	19:00	 South Downs Folk Singers	Canal Cafe	£12/£10
03 June	13:45	 Intro to Tap Dancing	Old Dojo, NPC	£5
03 June	19:00	 Bellydance to Fitness!	Old Dojo, NPC	Free
03 June	18:00	 Music Night	JAM Cafe	£10/£8
03 June	19:30	 Epic Comedy (Heat 1)	The Havana	£5
04 June	18:00	 Lightbulbs	CCAC	£8/£6
04 June	19:45	 Potted Pride and Prejudice	CCAC	£8/£6
04 June	21:00	 Unseen Portrait of the Heart	CCAC	£8/£6
05 June	19:00	 Spoken Word Night	The Havana	£12/£10
05 June	19:30	 Epic Comedy (Heat 1)	New Park Studio	£5
06 June	18:00	 Silly Gross Rants and Jokes	Canal Cafe	£5
06 June	19:00	 Shalaka Kurup	Canal Cafe	£8/£6
06 June	20:30	 A Cosmologist's Guide	Canal Cafe	£8/£6
06 June	19:00	 Bryan Stoops	New Park Studio	£8/£6
06 June	20:30	 Cordelia Graham	New Park Studio	£8/£6
07 June	18:30	 David Robinson	Picture Palace	£8
07 June	20:00	 Mia Reed	Picture Palace	£5
07 June	14:30	 Things A Bright Young Queer Can Do	The Old Court Room	£8/£6
07 June	16:00	 Things A Bright Young Queer Can Do	The Old Court Room	£8/£6

07 June	11:00	 120 Seconds	New Park Cinema	£3
07 June	11:00	 TADAA	One-o-Four	£2
07 June	16:30	 Clarice Cliff	One-o-Four	£8/£6
07 June	18:00	 Hill & Jones	One-o-Four	£8/£6
07 June	19:30	 Three Witches Brew	One-o-Four	£8/£6
07 June	20:30	 Toil	One-o-Four	£8/£6
07 June	14:15	 Oving Folk	CCAC	£12/10
07 June	17:30	 Drowning In The Sound	CCAC	£8/£6
07 June	19:30	 Phil Green	CCAC	£8/£6
07 June	21:00	 Regional Huns	CCAC	£8/£6
07 June	19:00	 Jaz Mattu	New Park Studio	£8/£6
07 June	20:30	 Rodney Beckford	New Park Studio	£8/£6
08 June	12:00	 Teddy Bear Trip	Chichester Canal	£15
08 June	11:00	 Sunday Lunch	CCAC	£8/£6
08 June	16:00	 Tea and Coffee Not Included	CCAC	£8/£6
08 June	17:30	 Destination: 'Old Hag'	CCAC	£8/£6
08 June	19:00	 The Welching Conspiracy	CCAC	£8/£6
08 June	20:30	 Other People's Shoes	CCAC	£8/£6
10 June	13:45	 Everything's Coming Up Roses	Old Dojo, NPC	£5
10 June	19:00	 Bellydance to Fitness!	Old Dojo, NPC	Free
10 June	18:30	 Cabaret for the End of the World	The Havana	£8/£6
10 June	20:00	 Andrew White	The Havana	£8/£6
10 June	18:30	 Cabaret Night	Canal Cafe	£12/£10
10 June	19:30	 Epic Comedy (FINAL)	One-o-Four	£10
11 June	13:00	 Acting Showcase	The ShowRoom	£1
11 June	18:30	 Shhh... Obey	CCAC	£8/£6
11 June	19:30	 Baron Fortitude	CCAC	£8/£6
11 June	21:00	 Sibling Dinner	CCAC	£8/£6
12 June	16:45	 Spanish Dance & Flamenco	Jubilee Hall, NPC	Free
12 June	19:00	 FLYWEIGHT	New Park Studio	£8/£6
12 June	20:00	 WHO WROTE THIS?	New Park Studio	£8/£6
12 June	21:15	 A Room Full Of Idiots	New Park Studio	£8/£6
13 June	All day	 InterACT Festival	The ShowRoom	£1
13 June	19:30	 Rabbit Hole Comedy	Canal Cafe	£8/£6
13 June	19:00	 Grandma's Shop	Christ Church	£8/£6

DATE	TIME	EVENT	VENUE	PRICE
13 June	20:30	 Escape the Rat Race	Christ Church	£8/£6
11-13 June	19:00	 The Seagull	HSDC Theatre	£12/£8
14 June	16:00	 THE LAST BANTAM	One-o-Four	£10/£8
14 June	17:45	 Confessions of a Teletubby	One-o-Four	£10/£8
14 June	19:30	 Kaleidoscope	One-o-Four	£12/£10

**YOUR SPACE -
MAKE NOTES!**

FOLLOW US ON SOCIAL MEDIA

@chichesterfringe



VENUEMAP



9



2



7



4



6



8



5



3



1

MAP KEY:

1. CANAL CAFE & RICHMOND BOAT
2. CHICHESTER CITY ARTS CENTRE
3. CHRIST CHURCH
4. THE HAVANA
5. JAM CAFE
6. NEW PARK STUDIO/PICTURE PALACE
7. THE OLD COURT ROOM
8. ONE-O-FOUR
9. THE SHOWROOM

GOOGLE MAPS



31 MAY - 14 JUNE 2025

Ch!chester

fringe

BUY TICKETS:

WWW.CHICHESTERFRINGE.CO.UK

